

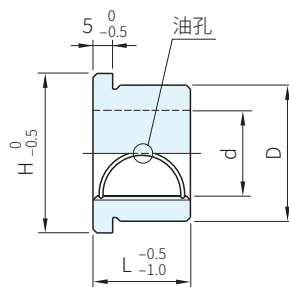
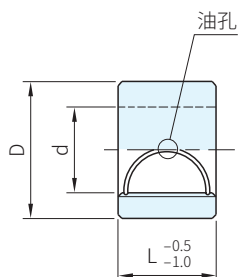


STA



STB

外徑			內徑
材質	處理	硬度	材質
SUJ2	高週波	HRC58	銅合金



TYPE	品號		L					D		庫存
	d									
STA	13	+0.010 +0.004	16	19	22	25		22	+0.017 +0.008	·
	16	+0.010 +0.004	16	19	22	25		25	+0.017 +0.008	·
	19	+0.012 +0.006		19	22	25		28	+0.017 +0.008	·
	22	+0.012 +0.006			22	25	28	35	+0.020 +0.009	·

TYPE	品號		L					D		H	庫存
	d										
STB	13	+0.010 +0.004	16	19	22	25		22	+0.017 +0.008	28	·
	16	+0.010 +0.004	16	19	22	25		25	+0.017 +0.008	31	·
	19	+0.012 +0.006		19	22	25		28	+0.017 +0.008	34	·
	22	+0.012 +0.006			22	25	28	35	+0.020 +0.009	41	·

**WA** 注意

- 以輕滑配或厭氧膠LOC680，LOC638黏著固定
- STA、STB和GPP、LLPM、LPM、SLPM、LPA、SLPA等配合使用
- 高速導柱、導套、滾珠套專用之有機鉬強力潤滑劑請參考 S-00668

訂貨：  ×  交期： 天

STA13 × 16